

# Design Villa Utsu

Levi, Finnish Lapland



Arctic Signature



*Brand New 5-Star Luxury*  
*Lodge under the Arctic Sky*





# 5-Star Services



## Private Chef

Private chef prepares local delicacies or continental meals according to your wishes



## 24/7 Host Service

Our VIP host is at your disposal during your stay



## Daily Cleaning

Daily cleaning and bed linen / towel change is always included



## Personal Chauffeur at standby

Your private driver takes you to activities and other locations comfortably in premium vehicle



## Experienced Tour Guides

Whether you want to go for husk ride, snowmobile safari or ski school, our experience tour guides will take good care of you



## Meet&Greet at the airport

Your private driver and VIP host will welcome you at Kittilä airport





# Key Features



## 5 en-suite bedrooms

All the bedrooms have double beds with ensuite bathrooms



## Located in stunning natural scenery

Villa is located up in the Utsuvaara area, with beautiful scenery around



## Great winter sport facilities

Levi is Finland's #1 Ski Resort



## Cozy dining area

Villa transforms into your own private dining room



## Top class amenities

Villa is equipped with high quality amenities and furnitures



## Bar / lounge / cinema room

In downstairs you have atmospheric lounge area that works as a bar or cinema room





# Description

Design Villa Utsu is brand new architectural beauty lying on the top of Utsuvaara. Design of the lodge respects the surrounding shapes and materials of the nature. While blending into the environment the lodge offers state of art luxury comforts inside. Grand size logs combined to elements of glass, rock and metal creates a perfect balance between harsh Arctic nature and warm luxurious feeling.

Lodge consist of three floors. From the main entrance you arrive first floor and its' high ceiling hallway. On the right side of the entrance you have a spacious cloakroom and area for three double bedrooms with ensuite bathrooms. Unique feature of two of the bedrooms is skylight window to make sure you have the best possibility to catch northern lights.

On the left side, the stairs will take you to the living room and dining area with panoramic windows to surrounding nature. This large and open space with cozy fireplace is the the heart of lodge where you get to spend a much needed downtime with your loved ones. On the middle floor you also have a high standard kitchen suitable for private chef and separate breakfast room. From here you have an access to sauna's dressing room and terrace area where you can find Drop jacuzzi, fireplace / BBQ and outside dining table.

In the basement floor there's a garage / equipment storage and well functioning utility room. Attraction of this floor is the lounge room & bar that can serve different purposes from movie night to relaxing cocktail moment by the fireplace. Another attraction is unique dressing room and shower room solution that leads into two-floor sauna with big glass window - a perfect place to spot northern lights.

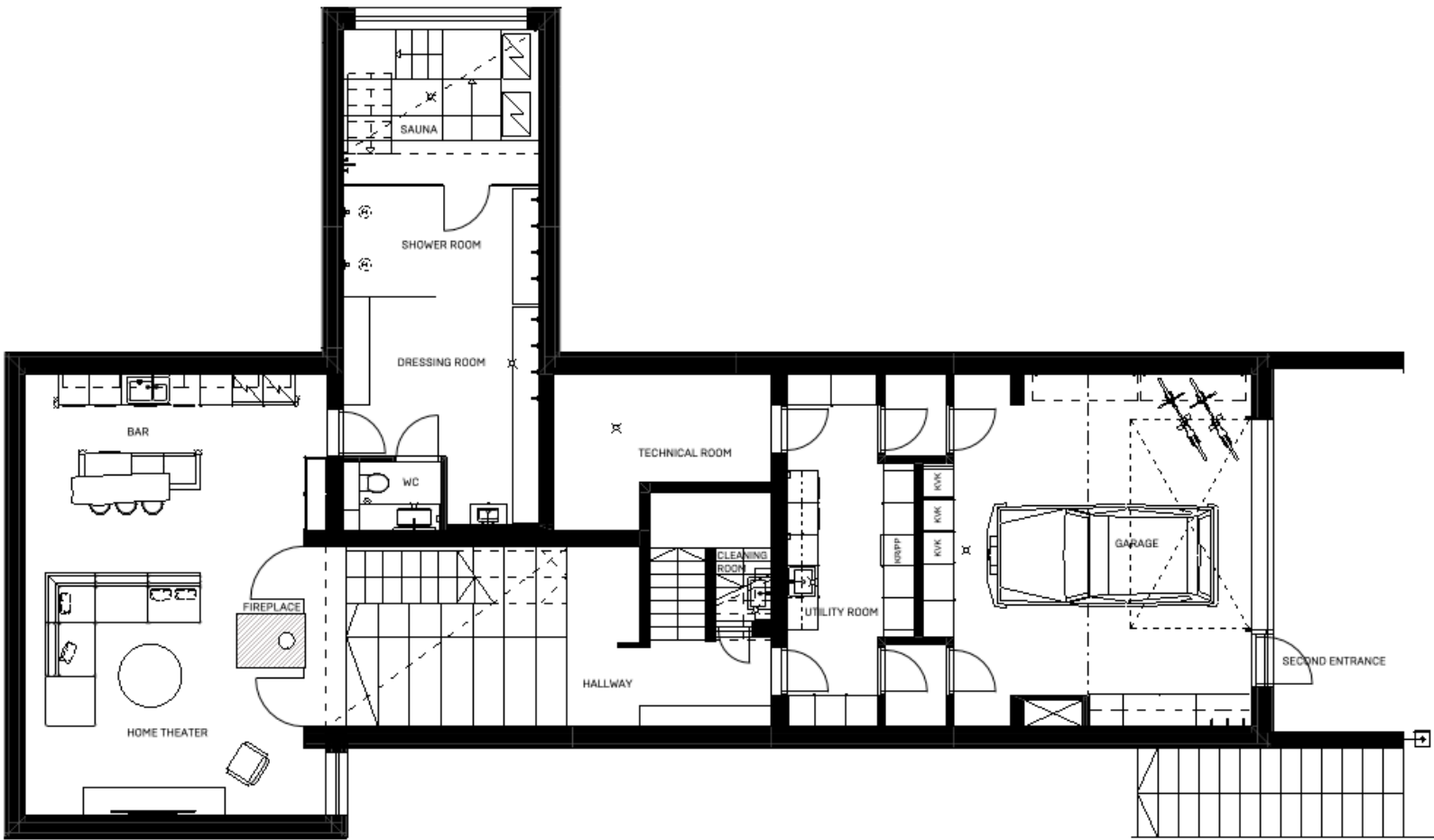
Second floor has two bedrooms. The master bedroom has stylish ensuite bathroom with bath tub. The other bedroom with ensuite bathroom can also be converted into lounge room if there's no need for 5th bedroom. From this room you have an access to spacious roof terrace. In both of the bedrooms you have skylight window which gives you a great opportunity to catch northern lights.



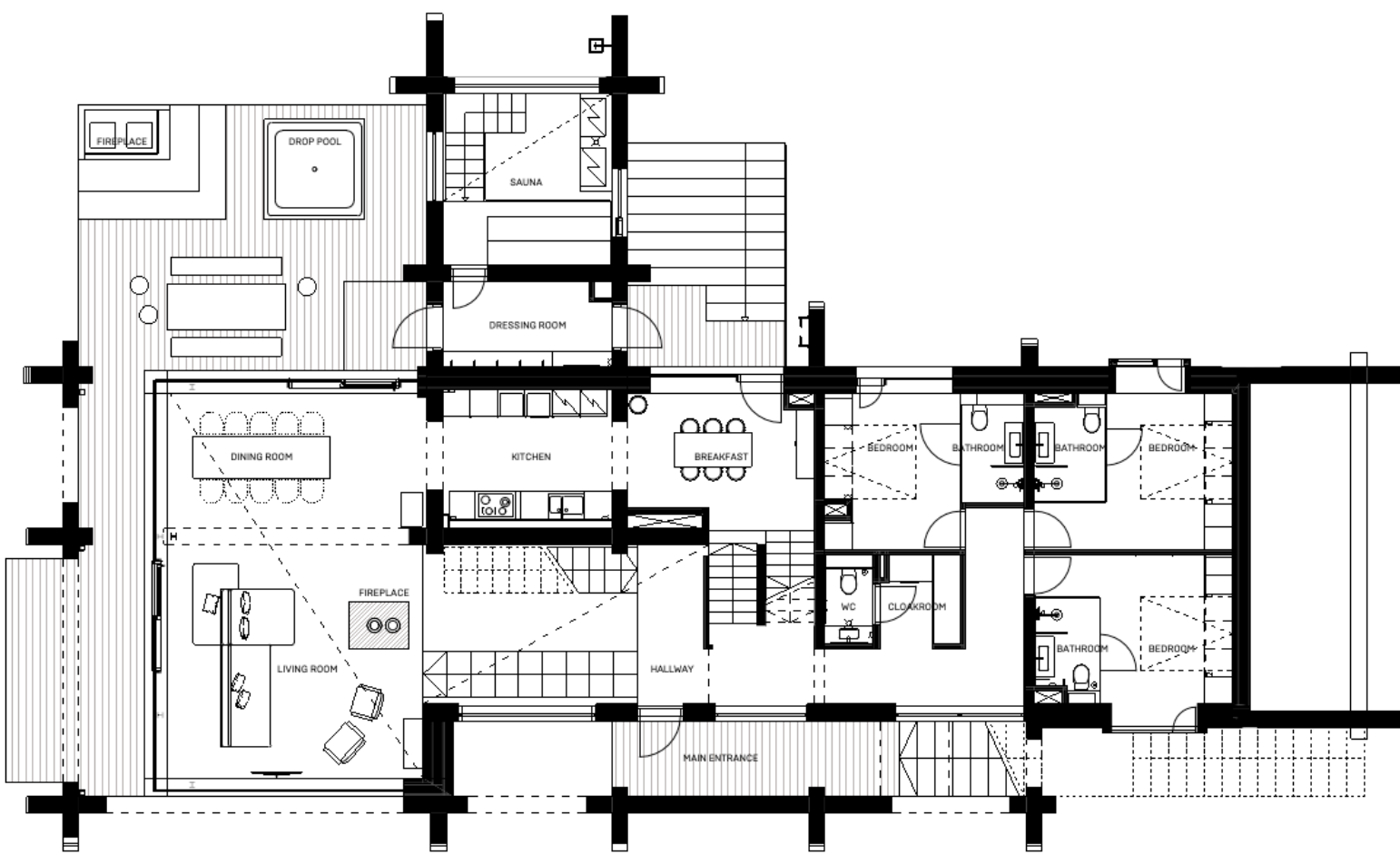


# Floor plan

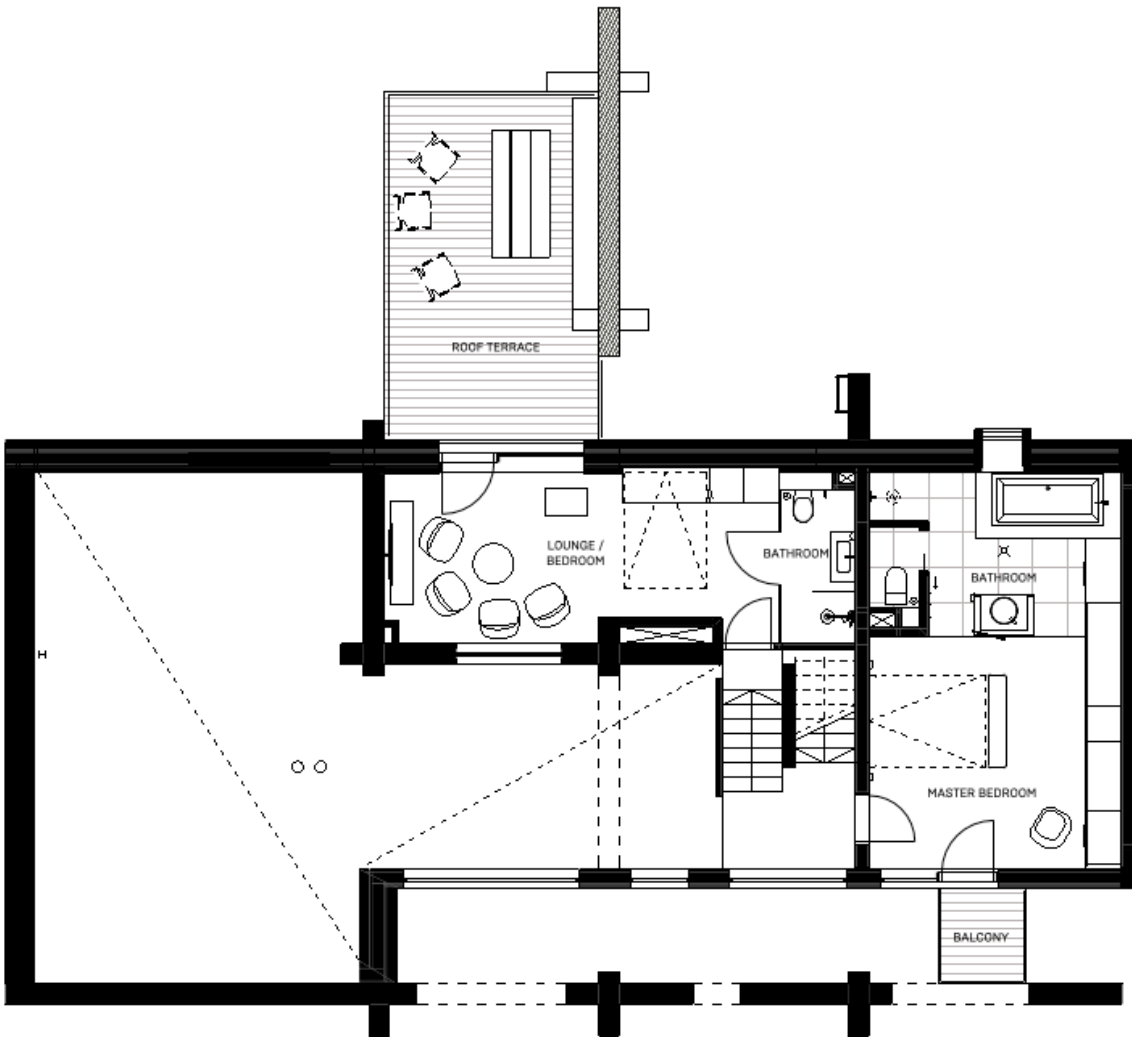
Ground floor



1st floor



2nd floor





# Location





















































































# Luxury Travel Beyond the Ordinary



Arctic Signature



## OFFICE

[design@arcticsignature.com](mailto:design@arcticsignature.com)

+358 10 5085 280

Meritullinkatu 33  
00170 Helsinki, FINLAND

[www.arcticsignature.com](http://www.arcticsignature.com)

SERANDIPIANS  
DMC Partner

